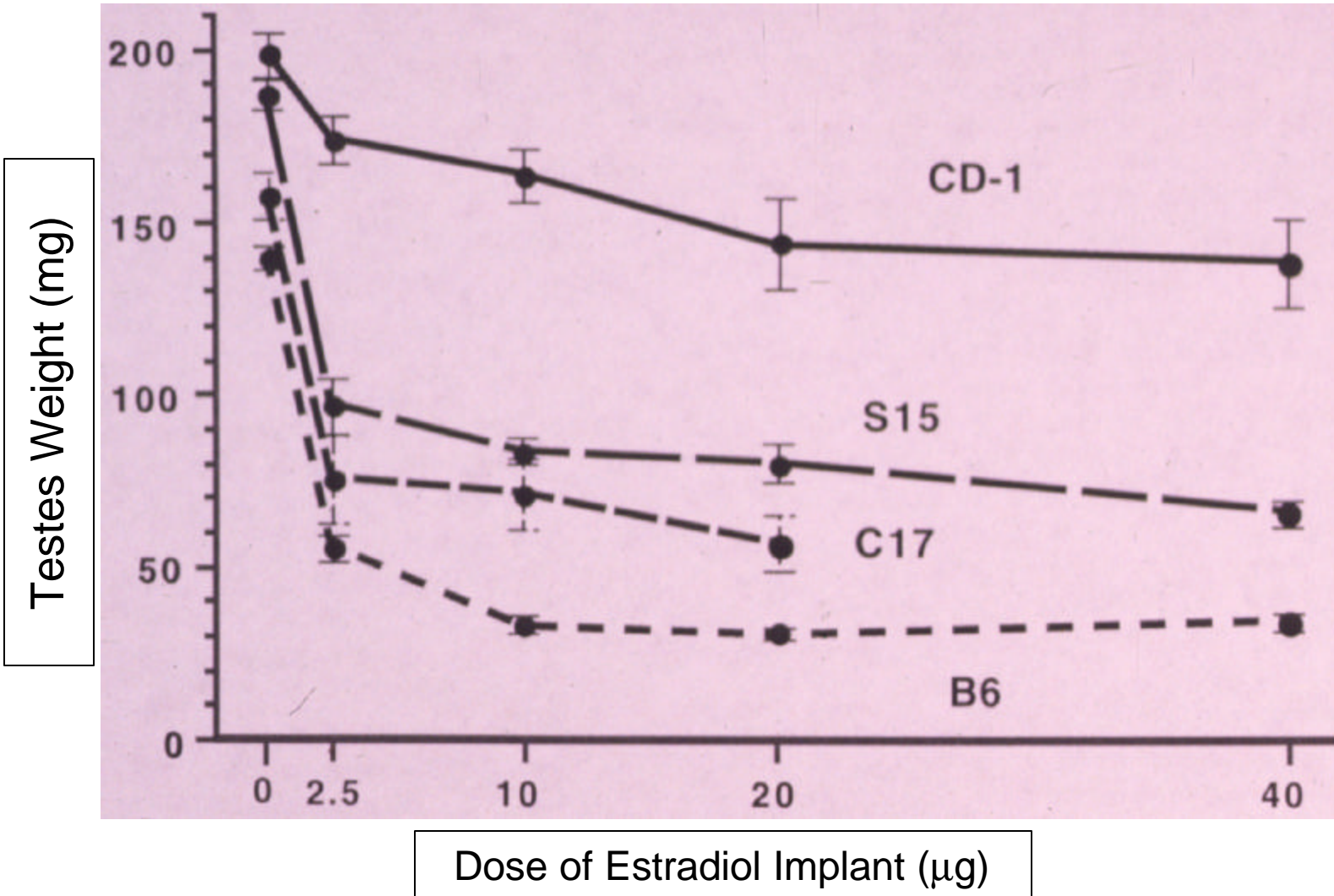
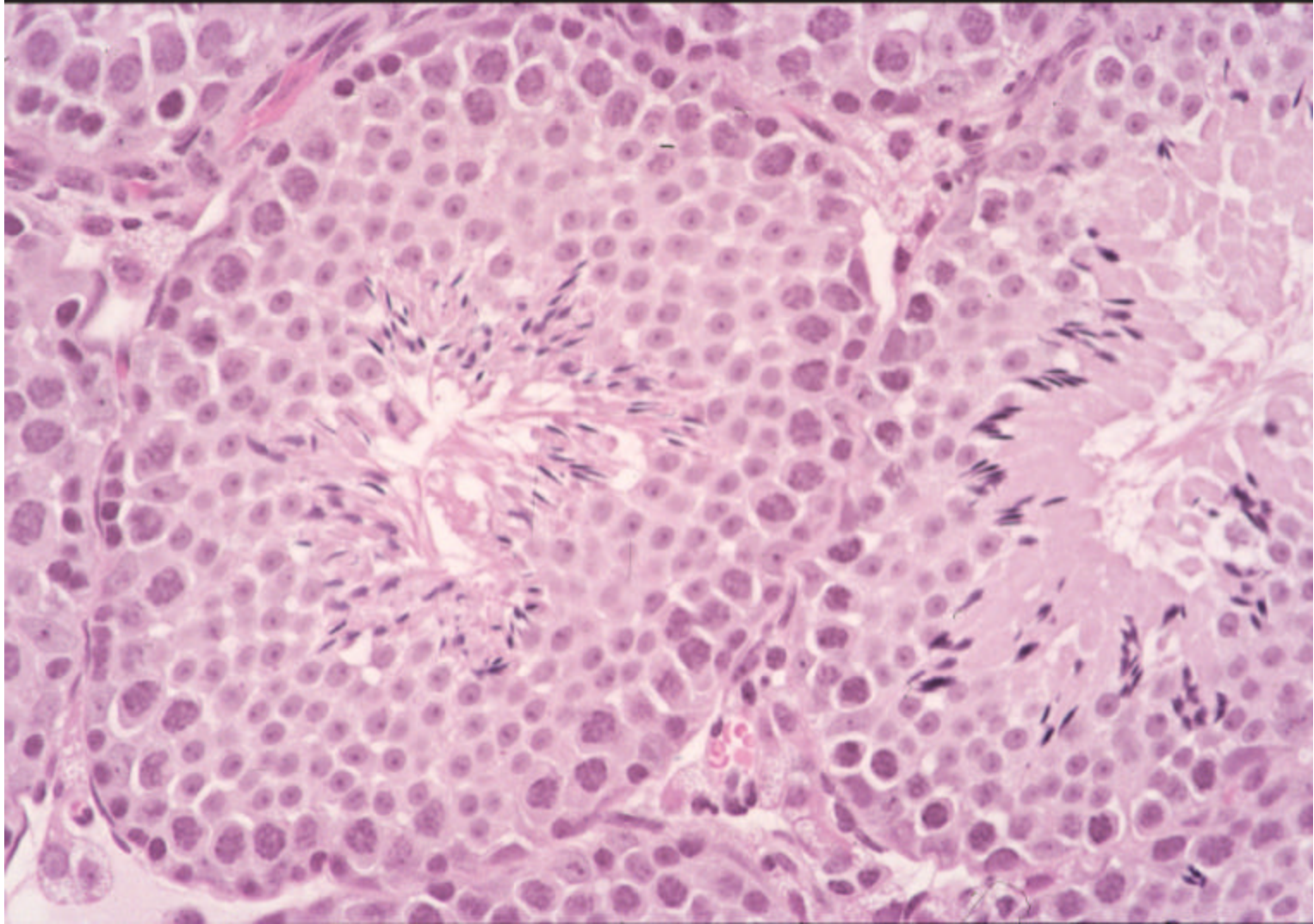
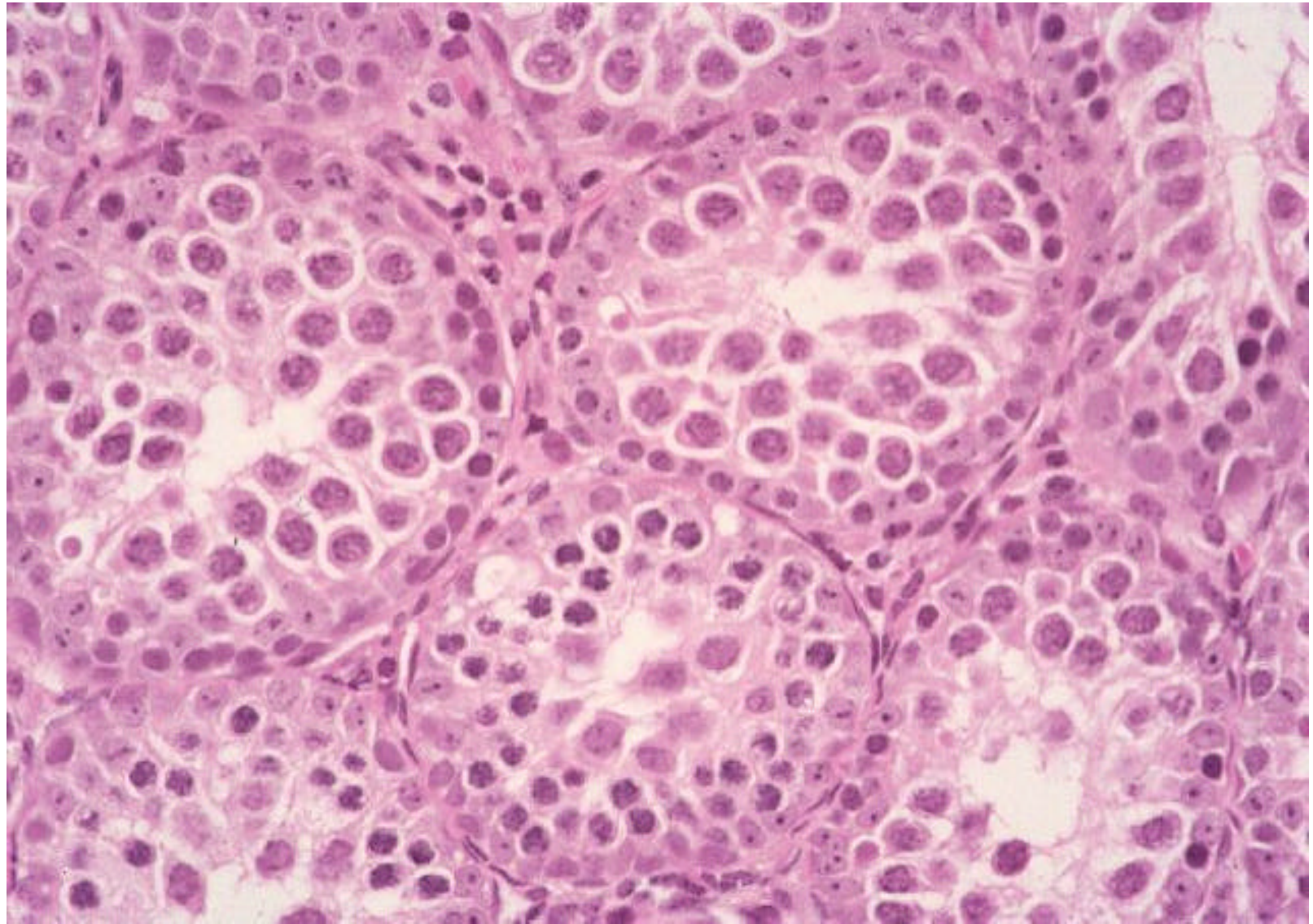


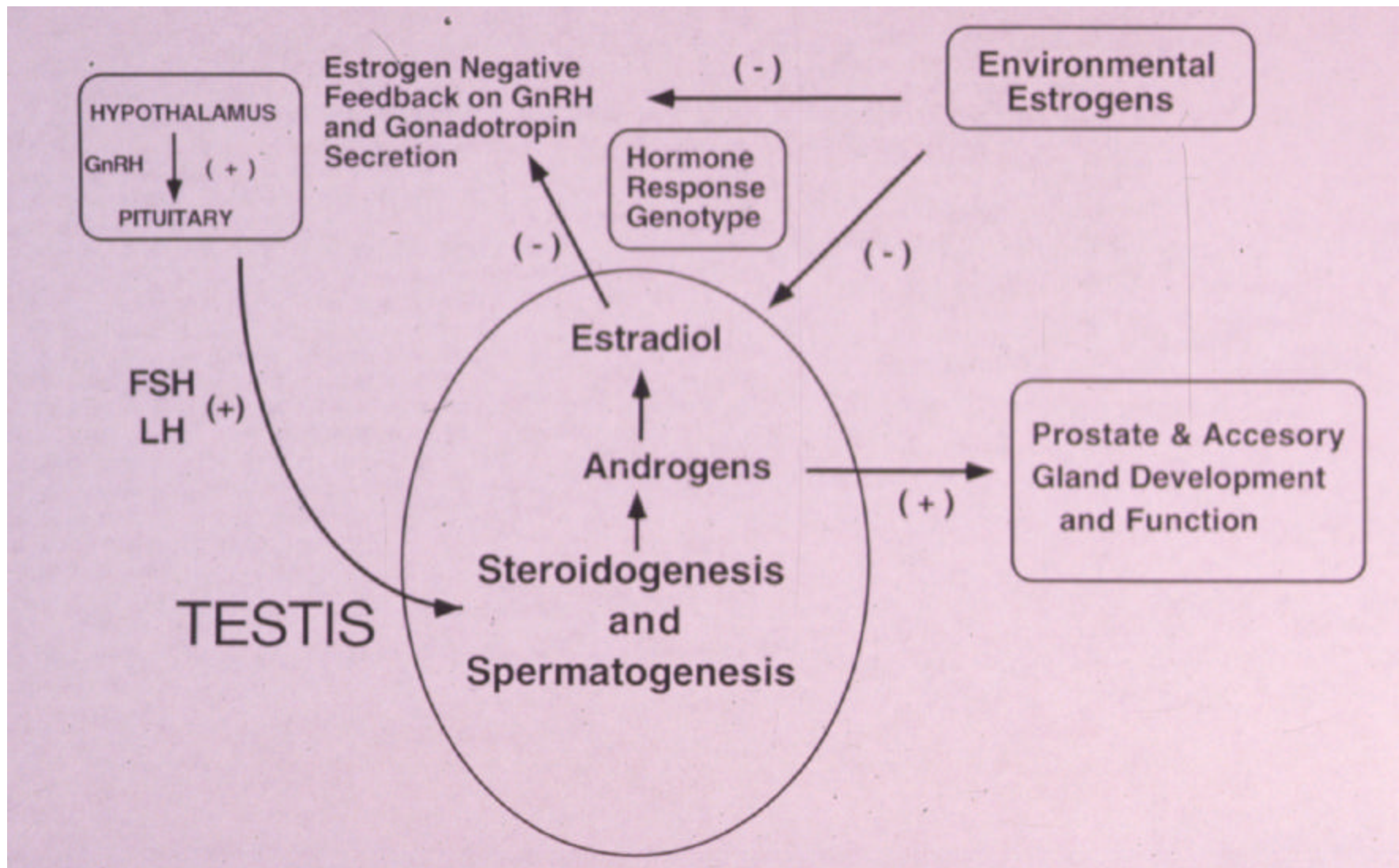
Effect of E2 Implants on Testes Weight Differs Among Strain of Mice. Mean \pm SEM for an average of 16 individuals per strain X E2 dose treatment group







Model for Genetic Variation in Susceptibility to Endocrine Disruption of Testicular Development and Spermatogenesis by Estrogenic Compounds



Estrogen-response genotype should be considered when prescribing estrogenic compounds for contraceptives, hormone-replacement therapy, as well as prevention and treatment of cardiovascular disease, breast and prostate cancer.

Current laboratory-animal-based safety tests of estrogenic chemicals using large litter size selected “outbred” lines of laboratory animals may greatly underestimate effects on estrogen sensitive genotypes.